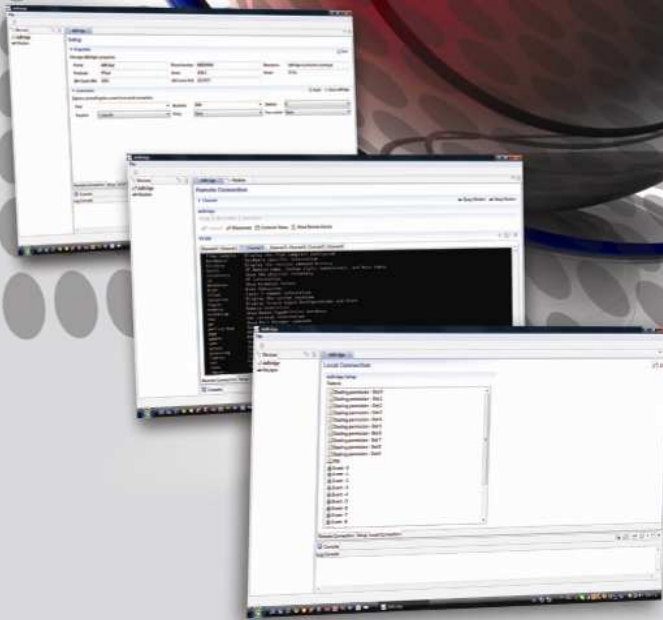


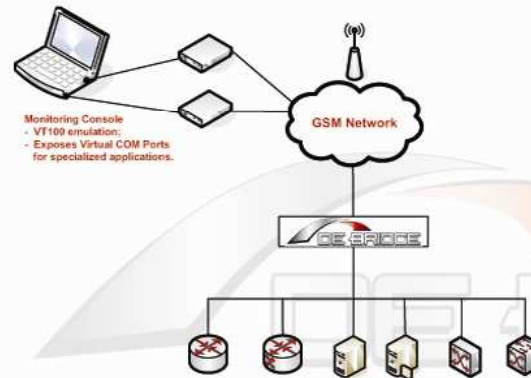
M2M solution for managing and monitoring remote devices and environment



PTech has introduced its deBridge M2M Device. This device integrates a GSM modem, control electronics and antennas into one customised assembly. The device allows mounting in a variety of locations, including standing distribution rack, making it suitable for a variety of devices connections.

When used with deBridge management software, this device delivers numerous advantages to consumers including:

- Remote hardware reset of connected devices;
- Remote VT100 emulated connection to device's console;
- Remote native application connection (via Virtual COM port) to device's console;
- Monitoring of the remote environment.



Hardware	
Input voltage	85 - 264 VAC , 47 - 440 Hz.
Working temperature range	-20 - + 50 C
Number of channels	1 or 7
Type of switched consoles	Rs232
Types of power switching	3 options: Mains connector 220V 2A (max total = 10A) Relay switch 0 - 220V, 0 - 10A Contactor 3x380 V, the current is limited by contactor type (>100kW)
Inputs	2 x 12V
Features	
	Automatic modem initialisation
	Allow only "trusted" numbers for connection - max 16 numbers
Events	
	Power OFF Power ON Rising input Falling input Temperature overheat For every arised event a SMS can be send to specified number with predefined text.
Data flow tracking	
	If there is no data flow for 5 min., the channel turns off and corresponding message is send, the connection is still on and after sending of command the channel can be restored. If there is no commands 5 min. after turning off the channel, the link is disconnected.
Modem status tracking	
	If the modem is not properly connected to the network automatic reset and initialization will be performed.
Other	
	Ability to send the device status: input state, temperature etc.
	Ability of entering and editing of 16 events - turn on/off event tracking, editing of the target number for SMS and text of the message.
	Ability of entering and editing the PIN code
	Ability of different channels (devices) switching without disconnecting and redialing.

deBridge Application

Language	Java
Operating Systems	Windows, Linux and Mac OSX
Platform	Eclipse RCP based desktop application
Features	
	Native GUI
	Create and edit network devices inventory
	Unlimited number of managed devices
	Simultaneously connections to deBridge controllers
	Integrated VT 100 emulator
	Exposes Virtual COM Ports for specialized applications
	Create roles for users, based on a variety of pre-defined permissions using roles-based management
	Full deBridge models and interfaces support